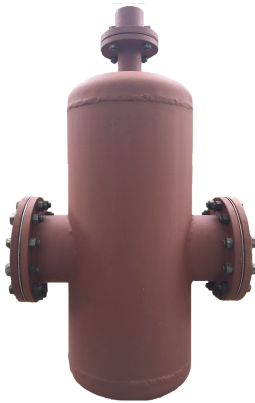


MICROBUBBLE AIR & DIRT SEPARATOR



FEATURES

- Air separation process based on the concept of coalescence, microbubbles tend to adhere to a surface and then grow together to form larger air bubbles.
- SS Pall rings used to provide
 - Large surface area per volume.
 - High probability of collision and adhesion of microbubbles, as the fluid flow gets deflected in different directions.
 - Minimal resistance to fluid flow.
- High capacity auto airvent.
- Separation of dirt particles heavier than water is facilitated by
 - Low water velocity.
 - Deflection of fluid stream in many different directions by the pall rings.
 - Creation of non-turbulent zone in the extended lower part.
- Ball valve at the bottom to drain the collected dirt particles.

BENEFITS

- Removes air microbubbles
 - Increases heat transfer efficiency.
 - Reduces chances of air lock.
- Better air separation than centrifugal action.
- Reduces corrosion in piping and sludge formation.
- Removes impurities heavier than water
 - Prevents choking of strainers.
 - Prevents damage to pumps and other equipment.
- Better dirt removal than perforated sheet strainer.

TECHNICAL DATA

Material

| | | |
|---------------------------|---|---------------|
| Shell | : | MS |
| Pall rings | : | SS |
| Auto airvent | : | Brass |
| Max. operating pressure | : | 16 Bar |
| Working temperature range | : | (-)10°C-120°C |

INSTALLATION AND COMMISSIONING

While installing, ensure that the inlet and outlet connections are properly oriented. Fix a valve at the drain point to facilitate routine maintenance.

DIMENSIONS

| MODEL | A | B | C | ∅D | Weight (kgs.) |
|------------|------|------|------|------|---------------|
| MBDS - 80F | 685 | 460 | 455 | 220 | 36 |
| MBDS-100F | 685 | 460 | 460 | 220 | 38 |
| MBDS-125F | 800 | 520 | 515 | 275 | 55 |
| MBDS-150F | 910 | 570 | 575 | 325 | 70 |
| MBDS-200F | 1135 | 650 | 685 | 400 | 100 |
| MBDS-250F | 1360 | 800 | 800 | 500 | 165 |
| MBDS-300F | 1585 | 960 | 910 | 600 | 245 |
| MBDS-350F | 1810 | 1110 | 1025 | 700 | 380 |
| MBDS-400F | 2035 | 1270 | 1135 | 800 | 485 |
| MBDS-450F | 2260 | 1430 | 1245 | 900 | 610 |
| MBDS-500F | 2485 | 1590 | 1360 | 1000 | 930 |
| MBDS-600F | 2935 | 1900 | 1585 | 1200 | 1555 |

All dimensions are in mm.
Flanges to IS : 6392 - 1971.

